

# HS-2700V



FRONT



SIDE



BACK

## Specifications

Scanning Method	Linear/Convex Electric Scan
Display Mode	B, B/B, B/M, M, B/Z
Range	3.5 MHz 0 ~ 2-24 cm (1 cm step) More than 5 MHz 0 ~ 2-16 cm (1 cm step)
Beam Focus Method	Full Digital Method 4 Stages Dynamic Transmission Focus Dynamic Receiving Focus
Ultrasound Frequency Rate	2.8 ~ 11.0 MHz
Display Monitor	12.1 inch Color Liquid Crystal Wide range viewing angle (Horizontal : 170° Vertical : 170°)
Image Display	Up/Down, Left/Right
Image Adjustment	B-Gain, M-Gain : 36 ~ 100 dB 1 dB step Dynamic Range : 35 ~ 95 dB 10 dB step (1 dB adjustable) STC : 8-Level Side Control Acoustic Power : 20 ~ 100% (10% step) γcorrection : 5 styles H-res(Image Enhancement) : OFF, Detail1, Detail2, Mild, Detail3, Resolution, Penetration, Clarity, Boundary, Anatomy
Doppler	Sweep Speed (M-Mode) : 5 steps CFM(Color Flow Mapping), PD (Power Doppler), PW(Pulse Wave Doppler)
Display Area for Doppler	Vertical, Box
Cine Memory	255 frames
Measurement Function	Distance, Circumference / Area, Volume, Tendon%, Histogram, Velocity, LV Calculation, Gestational Tables for all Large, Small Mixed Animal Practices
Character Display	Hospital Name(40), Patient Name(30), ID(26), Age, Sex, DOB, Date, Time, Probe Type, Range, Gain, Doppler Gain, Doppler Speed Range, ROI, Acoustic Power, Frequency, Dynamic Range, Gamma, H-res, Gray Scale, Focus Information
Probe Connector	x 2
Dimension	500 mm(W) x 1,200 mm(H) x 480 mm(D)
Net Weight	20 kg
Power Source	AC Adapter 100 ~ 240 V 50/60 Hz
Data Storage	Still Image(JPEG) Internal(100 image max.) / External USB memory Still Image(DICOM) External USB memory Moving Image(AVI) External USB memory
External I/O	USB Memory Port x 1 Video Output x 1 Foot Switch Port x 1 Printer Remote Port x 1
Probes	Linear Probe (11.0/9.0/6.0 MHz 40 mm) HLS-594M (10.0/7.5/5.0 MHz 50 mm) HLS-575M Convex Probe (5.0/3.5/2.8 MHz 60 R) HCS-436M, HCS-436MSC Micro-Convex Probe (9.0/7.5/5.0 MHz 20 R) HCS-572M
Accessories	AC Adapter, Power Cord, Ultrasound Gel

HONDA ELECTRONICS CO.,LTD.

DIAGNOSTIC SCANNER  
Convex / Linear Ultrasonic System

# HS-2700V

12.1 inch



Attention  
•Contents of this catalog are as of June 28, 2021  
•The specification and appearance are subject to change without notice for improvement.  
•Actual colors of products and colors of this catalog may a little different cause of printing.

HONDA ELECTRONICS CO.,LTD.

Medical Division

20 Oyamazuka, Oiwa-cho, Toyohashi  
Aichi 441-3193 Japan

TEL: +81-532-41-2514 FAX: +81-532-41-4441

www.honda-el.net

Registered company for ISO9001/ISO13485/ISO14001



is the trademark of HONDA ELECTRONICS CO.,LTD.  
This catalog is printed by vegetable ink on recycle paper.

21-216

June 28, 2021

# Probes

In order to deal with wide range application, more high resolution probes have been added to our selection. Please select the best matching probe for your needs.

## Micro-convex



## Linear



## Convex



- Curvature Radius
- Scanning Width
- Length of Cable



\* Video printer is not included.

# Doppler Mode

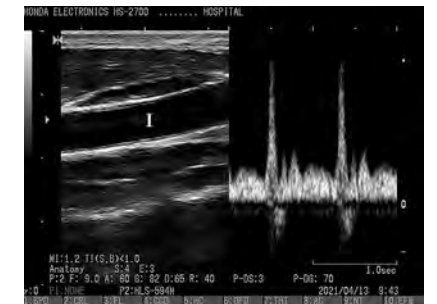
HS-2700V supports CFM (Color Flow Mapping), PD (Power Doppler) and PW (Pulse Wave Doppler) modes. They will adapt to a wide range of medical application. Additionally, HS-2700V has two kinds of ROI types. (Box, Vertical)



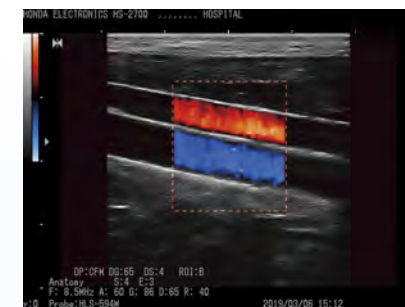
CFM (Color Flow Mapping)



PD (Power Doppler)



PW (Pulse Wave Doppler)



Box



Vertical



*H-res* (Our Resolution Technology)

The development of ultrasound technology over the years crystallized into the image enhancing technology as "H-res". Optimum image can be achieved by adjusting the H-res parameter for each application and probe.



## Main applications

- Pregnancy detection (dog, cat, etc)
- Abdominal, cardiac for small animal
- Tendon (equine)
- Health care of animals in the pet shop
- Scanning in the zoo

## Made in Japan

This product is assembled in Japan. We produce even the ultrasound sensor ceramics in its own factory.

