

ECO 5

Ultra-Portable, **Ultra**-Affordable, **Color** Doppler



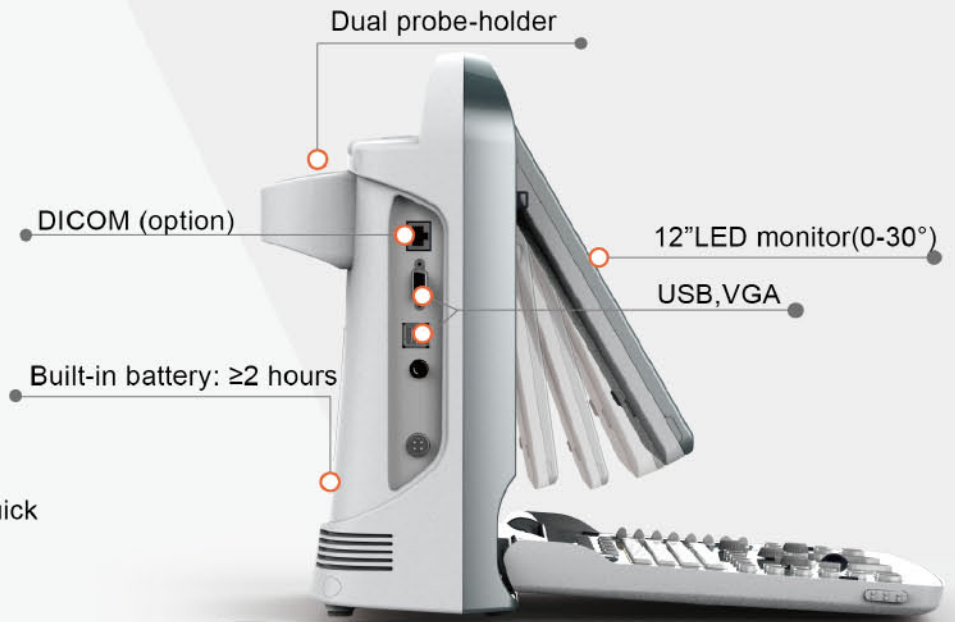
CHISON
Value Beyond Imaging

Eco-friendly

- Less radiation
- Lower power consumption
- Longer life: LED

Ergonomic

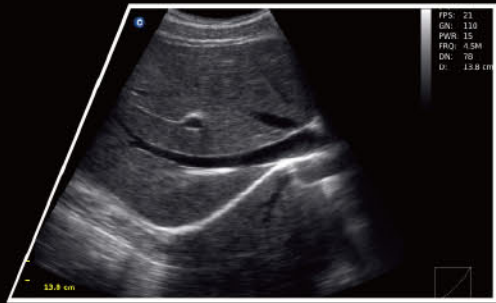
- Rotatable LED monitor (0~30°): tilt to different viewing angles
- Unique LED: reduce eye fatigue
- Keyboard design: for easy and quick access
- Full screen display mode



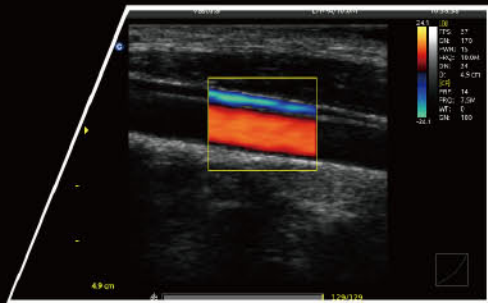
Excellent

- Full digital beam-former
- Color doppler technology
 - Double frame rate technology
 - Color priority
 - Color filter
- Applications
 - Abdomen, OB&GYN, Urology, Vascular,
 - Small Parts, Pediatrics, MSK, Basic Cardiology
- Display modes: B, B/B, 4B, M, B/M, CFM, PW, Trapezoidal
- Advanced technologies: i-Image, THI, SRA, Compound imaging
- 16G memory card
- 500G harddisk (option)
- Streamlined workflow

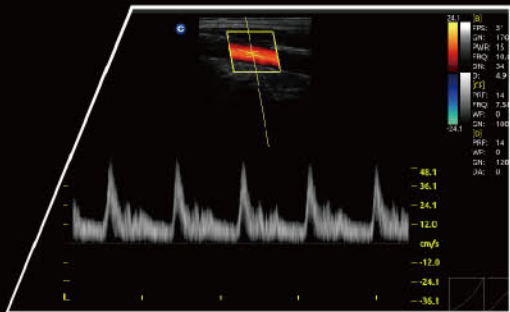




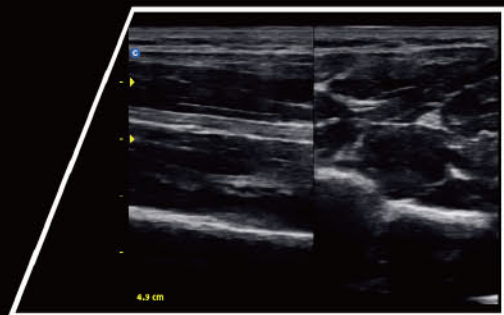
FPS: 23
DR: 23.0
PAR: 15
FRQ: 4.5MHz
DL: 70
D: 13.8 cm



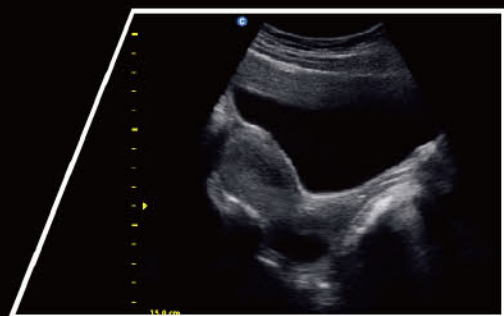
FPS: 27
DR: 17.0
PAR: 15
FRQ: 10MHz
DL: 24
D: 4.9 cm
PRF: 14
RFQ: 7.5k
MT: 0
CN: 100



FPS: 10
DR: 17.0
PAR: 15
FRQ: 10MHz
DL: 24
D: 4.9 cm
PRF: 14
RFQ: 7.5k
MT: 0
CN: 100
JAL: 0
48.1
36.1
24.1
12.0
0
-12.0
-24.1
-36.1



4.3 cm



13.8 cm



Efficient

Streamlined Workflow

The multi-purpose user presets, comprehensive measurement & report system, built-in EasyView image archive system, quick image storage / retrieve / transfer, one-button direct print, make the complete workflow better than what you can dream of.



Various Measurements



Detailed Reports



EasyView Image Archive System

ONE KEY



- **Support PC Printer** (HP DeskJet 1010, HP LaserJet 1020 Plus, HP LaserJet Pro P1102W, HP LaserJet Pro 200 M251n)



2.5MHz-5.0MHz Convex
C3-A



5.3MHz-10.0MHz Linear
L7M-A



5.3MHz-11.0MHz Linear
L7S-A



2.5MHz-5.0MHz Micro-Convex
MC3-A



4.5MHz-8.0MHz Transvaginal
V6-A



4.5MHz-8.0MHz Micro-Convex
MC6-A



5.0MHz-10.0MHz Trans-Rectal
R7-A

CHISON Medical Technologies Co., Ltd.

Sales & Service Contact Address:

No.9, Xinhuihuan Road, Xinwu District, Wuxi, Jiangsu, China 214028

TEL: 0086-510-85310593 / 85310937 FAX: 0086-510-85310726 EMAIL: export@chison.com.cn

We reserve the right to make changes to this catalogue without prior notice.
Please contact us or your local dealer for the latest information.

* Please refer to the user manual for details