

See the future  
**SIUI**

# CTS-6600

Portable Digital  
B/W Ultrasound System





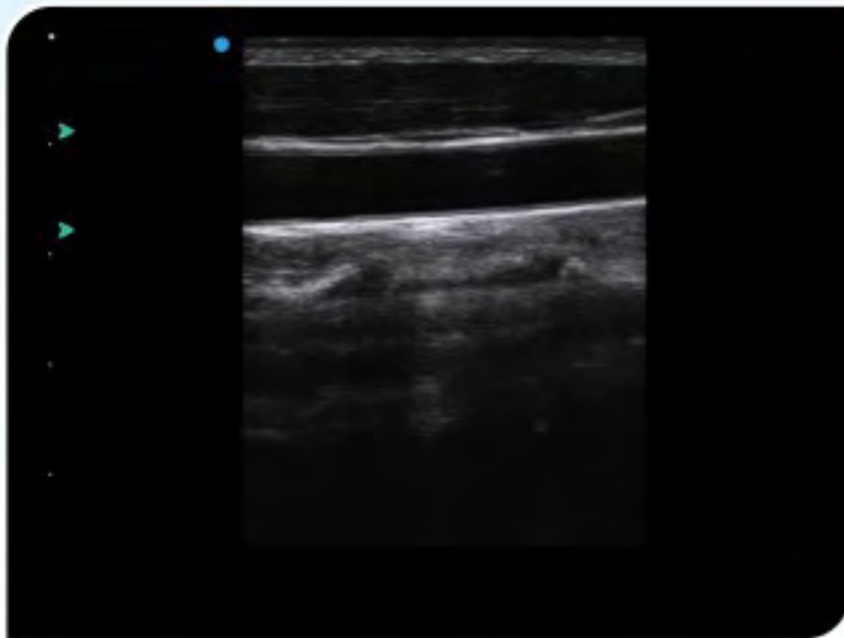
# CTS-6600

## ◎ Specification

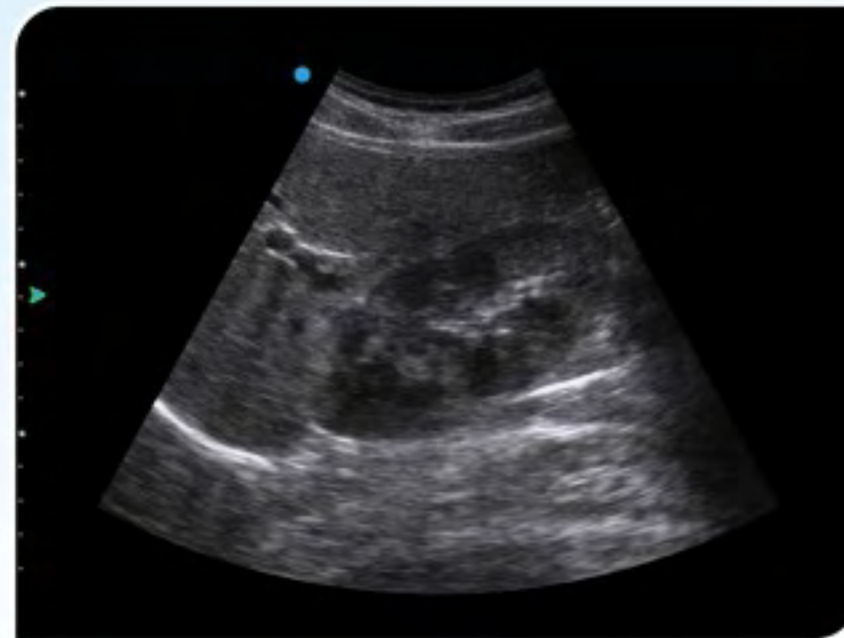
- Monitor: 15-inch LCD monitor
- Depth: Scanning depth up to 252mm
- B Gain: 0~100dB
- Probe frequency range from 2.5 to 10.0 MHz
- Two probe connectors as standard
- USB port: 2
- Memory: 500G
- With or without built-in lithium battery in two versions, battery last for 3.5 hours operation time

## ◎ Feature

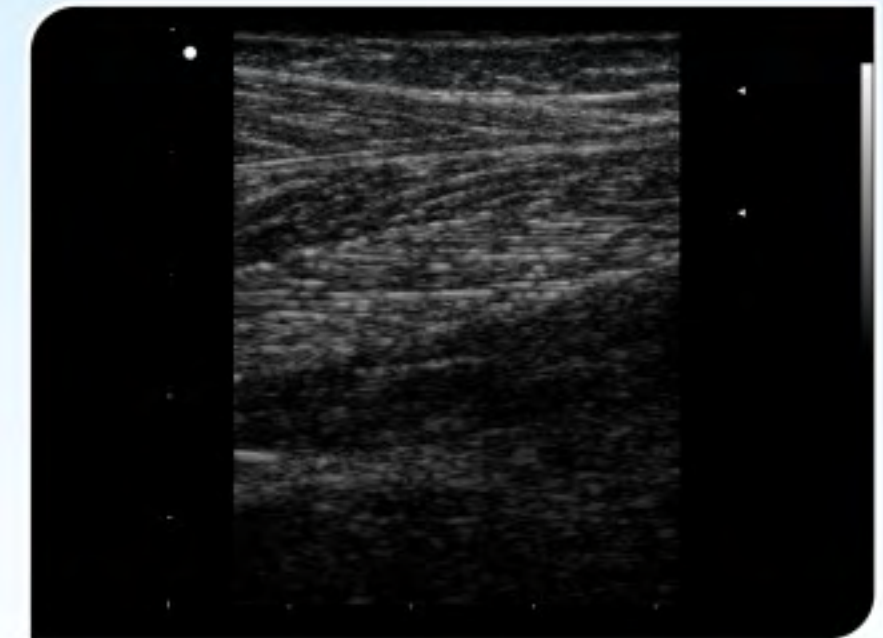
- Powerful digital beamforming technology
- Tissue Harmonic Imaging
- Unique high-definition zooming function
- IP one-key optimization
- Complete applications
- Comprehensive measurement package



Carotid



Hepatorenal section



MSK

# SIUI

Shantou Institute of Ultrasonic Instruments Co., Ltd.

Add: #77, Jinsha Road, Shantou 515041, Guangdong, China

Tel: +86-754-88250150 Fax: +86-754-88251499

E-mail: [siui@siui.com](mailto:siui@siui.com) Website: <http://www.siui.com>

Specifications and appearance are subject to change without prior notice.

DCY2.782.EN.CTS-6600\_CY/1509