

## Automated ELISA or Biochemistry Programmable Analyzer

<b>Typical Biochemistry throughput</b>	Up to 200 endpoint reactions per hour, up to 170 kinetic reactions per hour
<b>Min. and Max. pipetting volume</b>	2 µL - 1.95 mL
<b>Precision for volumes &lt;5 µL</b>	<2.5% CV
<b>Precision for volume &gt;5 µL</b>	<1% CV
<b>Maximum number of specimens</b>	96 (including calibrators and controls)
<b>Maximum number of reagents</b>	Typically 27 to 44
<b>Standard reagent rack</b>	27 positions, other configurations optional
<b>Reaction vessel</b>	Standard microwell plates or strips
<b>Instrument bottles</b>	2L wash 1L rinse (or second wash) 2L waste bottle 1L priming bottle
<b>Thermal control</b>	Incubation timing is software controlled and automatically optimized Well, probe and tubing; ambient or 37°C (other options available)
<b>Wash head</b>	8-probe, automatic prime and rinse
<b>Programs</b>	Wash protocols are user-programmable for aspirate, dispense, soak, mix
<b>Light Source</b>	Halogen Lamp
<b>Optical design</b>	Reads bichromatic absorbance in four channels, user-selected monochromatic or bichromatic results 8 position filter wheel : 340 - 700 nm
<b>Photometric accuracy</b>	± (1% of the reading +0.005A from 0 to 1.0A) ± (2% of the reading from 1.0 to 3.0A)
<b>Software format</b>	USB thumb drive and Internet upgrades
<b>Supported operating systems</b>	Windows® 7, 8 and 10
<b>Minimum system requirements</b>	Operating System dependent* please see Windows® system requirements
<b>Calculation modes</b>	Single standard, factor, fixed time kinetics, kinetics by standard or factor, qualitative absorbance cutoff calculations, multi-calibrator point-to-point, linear regressions, log-logit, cubic spline, and nonlinear regressions (curve fit)
<b>LIS integration</b>	LIS compatible, patient database stores test results
<b>Dimensions &amp; weight</b>	92.075 cm W. x 54.61 cm L. x 47.3075 cm H. Approx. weight = 35 kg 36.250" W. x 21.500" L. x 18.625" H. Approx. weight = 77 lbs (Allow additional 6" W for waste and wash containers)

ISO 13485:2016



**Awareness Technology, Inc. USA & INTERNATIONAL:**  
1935 S.W. Martin Hwy., Palm City, FL 34990, USA  
tel.: +1 772 283 6540, fax: +1 772 283 8020  
info@awaretech.com

**Awareness Technology, Inc. EUROPE:**  
Franz-Siegel-Gasse 1, 2380, Perchtoldsdorf, Austria  
tel.: +43 (1) 804 81 84, fax: +43 (1) 804 81 85  
info@awaretech.eu

**Awareness Technology, Inc. ASIA & AFRICA**  
Q3-146, SAIF Zone, 120543, Sharjah, United Arab Emirates  
tel.: +971 (06) 557 80 58, fax: +971 (06) 557 80 59  
info@awaretech.com



Optional Reagent Cooling Accessory  
Maintains reagents at 12°C to 15°C below  
ambient temperature

312910 08C

www.awaretech.com

# ChemWell® 2910

*Programmable Open System*

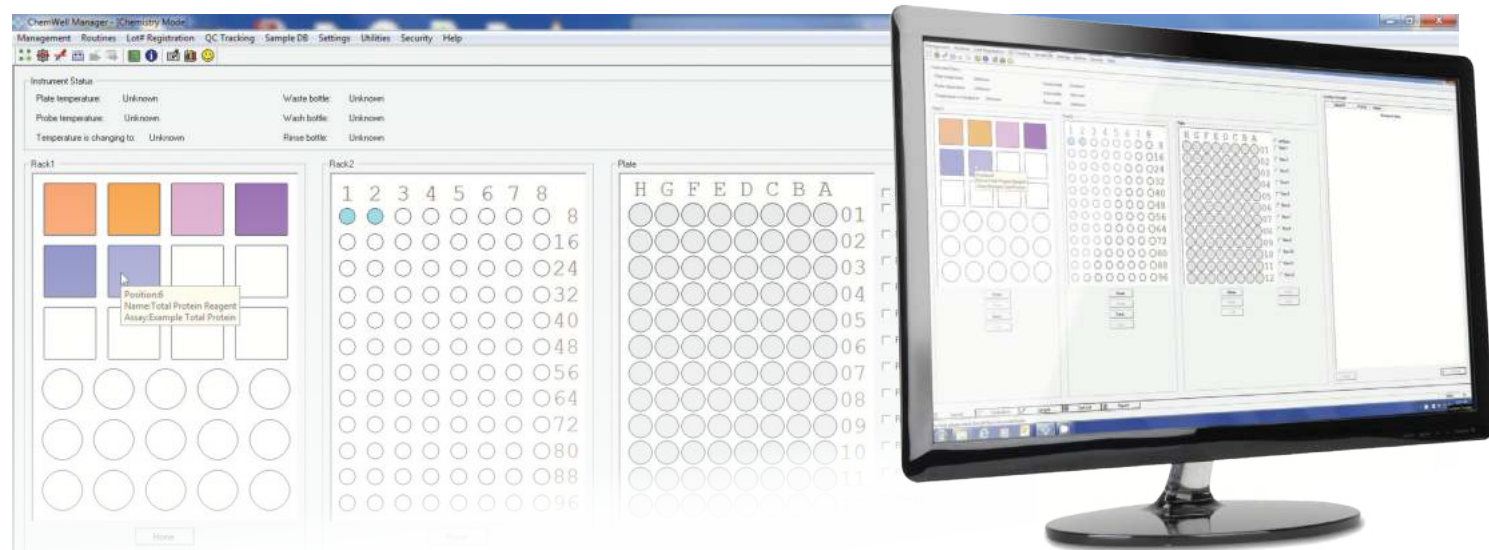
*Automated ELISA/Biochemistry Analyzer*



- Accurate results, dependable performance
- Automated analyzer for microwell based ELISA or Biochemistry
- Versatile open system
- Cost-effective operation

## The Ultimate In Flexibility

 **AWARENESS**  
TECHNOLOGY, INC.



Graphic Interface for Visual Reference that mirrors the process stages of the analyzer.

## ChemWell 2910, Fully Automated Computer Controlled, User Programmable, Open System Analyzer, Is Two Systems In One!

### ELISA Mode

- Analyze ELISA assays in standard 96 well coated Microplate
- Mix multiple assays on a single plate even if timing is different
- Multiple calculation modes

### Biochemistry Mode

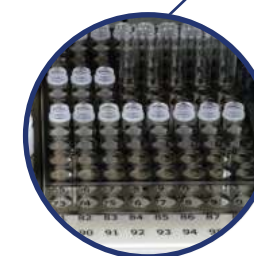
- Analyze chemistry assays in standard 96 well uncoated microwells
- Random access kinetic and endpoint assays
- 200 Tests per hour

### ChemWell 2910 Provides:

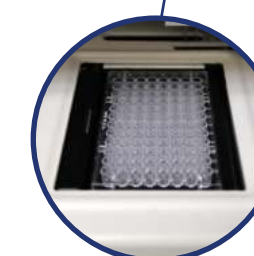
- ◆ Ability to process microwell based ELISA or biochemistry assays using the same analyzer
- ◆ An open system with user definable ability to program any assay menu
- ◆ Customizable and expandable protocols
- ◆ Proven technology and performance - True walk away capabilities
- ◆ World class customer support
- ◆ Ease of operation through intuitive design
- ◆ User friendly Assay Editor System software that prevents process timing conflicts
- ◆ Flexible placement of reagent and samples for optimization
- ◆ Complete patient database available with search and tracking system
- ◆ Flexible reporting options including export to excel or LIS



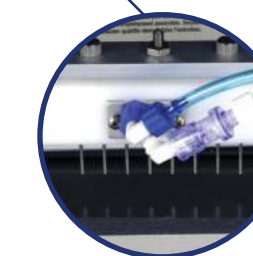
Reagent Rack  
up to 44 Reagents



Sample Rack  
96 Samples



Reaction Vessel



Washer

# Chem Well®

Versatile • Flexible • Reliable • Accurate • Programmable • ELISA & Biochemistry Analyzer

### The Ultimate in Flexibility

The same instrument that automatically processes microwell based ELISA tests, is also a fully automated 200 test per hour routine biochemistry analyzer. The two in one functionality makes ChemWell 2910 an ideal addition to any laboratory that is looking to maximize efficiency, savings, and improve productivity without sacrificing valuable benchtop work space.

### Key ChemWell® 2910 Features:

- ◆ On Board Pre-dilution Options in the Rack or Plate
- ◆ Fluid Handling - aspirates and dispenses from 2 µL to 1.95 mL
- ◆ On-Board programming for work flow optimization
- ◆ On-Board storage of QC, calibrator data and Levey-Jennings
- ◆ 8 Filter wheel with 340 nm – 700 nm Range
- ◆ On-Board Plate Washer, Mixer and Incubation
- ◆ Self-cleaning liquid sensing probe
- ◆ Security Lock Out Options - Data Archive - unlimited capacity
- ◆ Create a repository of programmed assays using the included assay editor

